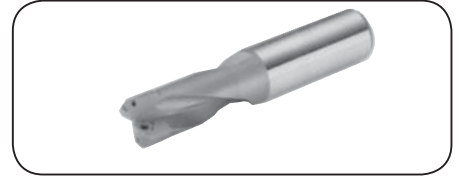
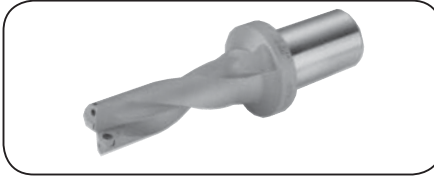
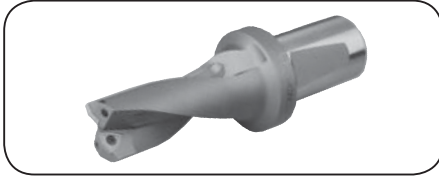


Inserts and Parts for Discontinued Series

Full Cut Drill BKS Type

*Production of this cutter body is on a made-to-order basis only.

Full Cut Drill Inserts only sold in Japan.



■ Inserts (JPW95 Type) Standard, Slim

P Steel **M** Stainless Steel **K** Cast Iron **N** Non-Ferrous Metal **S** Exotic Alloy **H** Hardened Steel

		- A (Copper, Exotic Metal)		- B (General Purpose)		- BS (General Purpose - Strong Edge)	
		Coated Carbide		Carbide			
Application	Grade						
	High Speed/Light						
	General Purpose						
		AC225		AC2000		G10E	
Cat. No.		AC225		AC2000		G10E	
		Inscribed Circle		Thickness		Nose Radius	
	JPW 950504A	▲	▲		5.5	2.3	0.4
	950704A	▲	▲		7.0	3.0	
	JPW 950504B	▲	▲	▲	5.5	2.3	0.4
	950704B	▲	▲	▲	7.0	3.0	
	JPW 950504BS	▲			5.5	2.3	0.4
	950704BS	▲			7.0	3.0	

■ Inserts (JPW84 Type) Standard

P Steel **M** Stainless Steel **K** Cast Iron **N** Non-Ferrous Metal **S** Exotic Alloy **H** Hardened Steel

		- C (General Purpose)		- CS (General Purpose - Strong Edge)		
		Coated Carbide		Carbide		
Application	Grade					
	High Speed/Light					
	General Purpose					
		AC225		AC2000		
Cat. No.		AC225		AC2000		
		Inscribed Circle		Thickness		
	JPW 840804C	▲	▲	▲	8.0	3.8
	841004C	▲	▲	▲	10.0	3.8
	841204C	▲	▲	▲	12.0	4.8
	841508C		▲		15.0	5.3
	JPW 840804CS	▲			8.0	3.8
	841004CS	▲			10.0	3.8
	841204CS	▲			12.0	4.8
	841508CS	▲			15.0	5.3

■ Spare Parts (Standard)

					Applicable Holder
Insert Seat (External)	Insert Seat (Internal)	Pin	Clamp Screw	Wrench	
—	—	—	BFT2045T06	TRX06	0.5
—	—	—	BFT2506T08	TRX08	1.1
—	—	—	BFF2506T08	TRX08	1.1
—	—	—	BFF3505T10	TRX10	2.0
TS3744A	TS3744B	TSP3744	BFF3505T10	TRX10	2.0
TS4554A	TS4554B	TSP4568	BFF4510T15	TRX15	3.4
TS5568A	TS5568B	TSP4568	BFF4510T15	TRX15	3.4

(Note) Pin sold with insert seat as a set.

Recommended Tightening Torque(N · m)

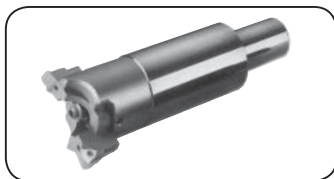
■ Spare Parts (Slim)

		Applicable Holder
Clamp Screw	Wrench	
BFT2045T06	TRX06	0.5
BFT2506T08	TRX08	1.1

Recommended Tightening Torque(N · m)

Counter Drill VPS Type

*Production of this cutter body is on a made-to-order basis only.



■ Inserts

Inserts are same as those for the Full Cut Drill.

■ Spare Parts (Counter-weight)

Applicable Toolholder Cat. No.							Applicable Holder
	Differential Screw	Radial Adjustment Screw	L Key (DS)	L Key (Radial)	Clamp Screw	Wrench	
ST32-VPS051-135	DS41	M4X10L	LH040	LH020	BFT2506T08	TRX08	1.1
ST40-VPS061-165	DS53	M5X16L	LH050	LH025	BFF2506T08	TRX08	1.1
ST40-VPS075-180	DS68	M5X16L	LH060	LH025	BFF3505T10	TRX10	2.0
ST40-VPS092-180	DS68	M5X16L	LH060	LH025	BFF3505T10	TRX10	2.0
ST50-VPS109-225	DS68	M5X20L	LH060	LH025	BFF3505T10	TRX10	2.0
ST50-VPS129-225	DS68	M5X20L	LH060	LH025	BFF3505T10	TRX10	2.0

Recommended Tightening Torque(N · m)

▲ mark : To be replaced by new item (Please confirm stock availability)